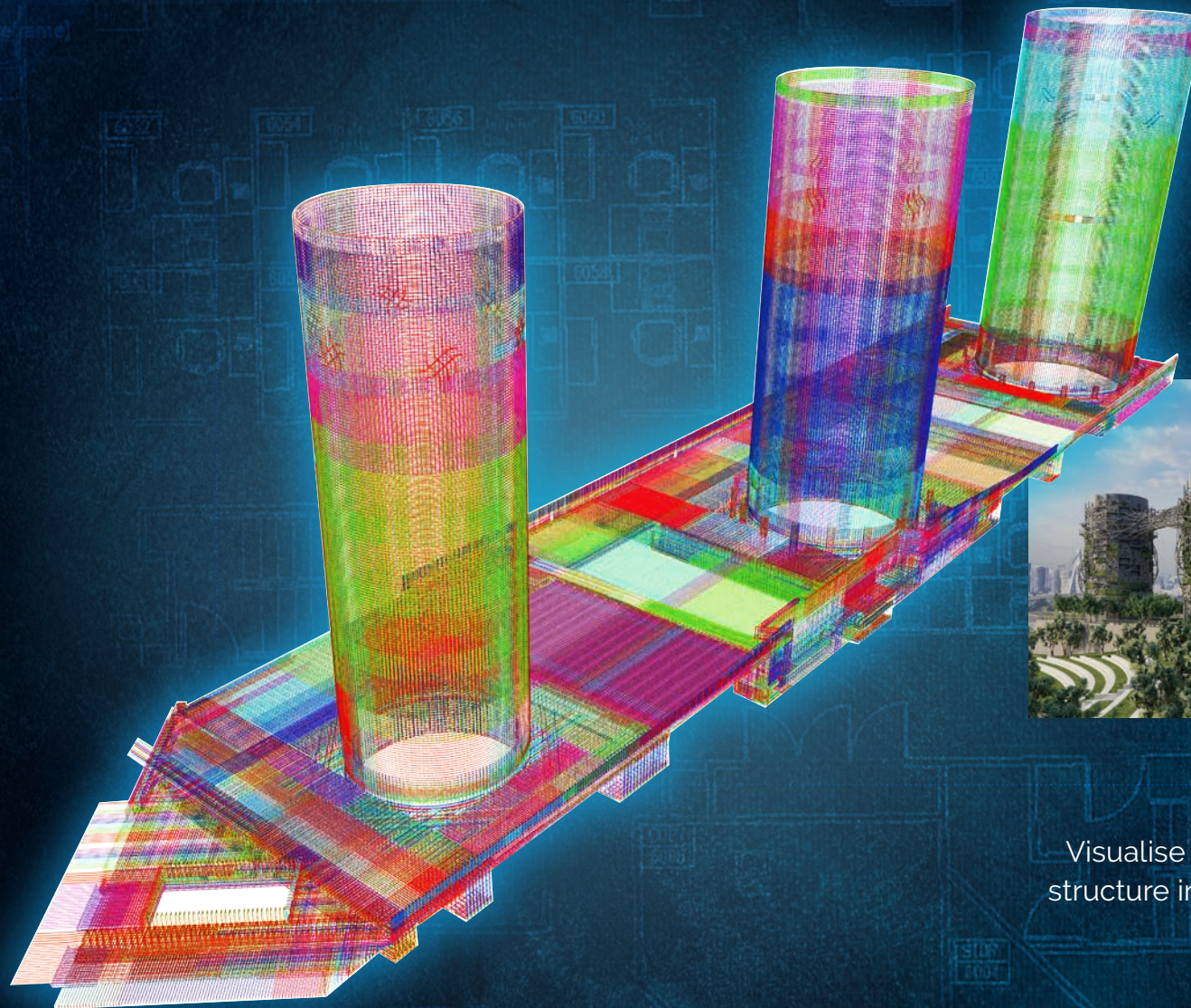




DIGITAL ENGINEERING SERVICES

STEEL REINFORCEMENT



Rozelle Interchange Vent Stacks

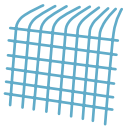
Visualise your reinforced concrete structure in 5D for a safer and more cost efficient build.

100% IN-HOUSE REBAR SERVICES

Your ONE STOP SHOP for steel reinforcement modeling, production and delivery.

We take ownership of a project from start to finish to help you BUILD FASTER and REDUCE WASTE.

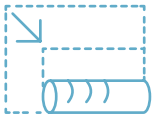
Our proprietary owned 5D detailing software, ADDA*, identifies:



Material and embedment clashes



Prefabrication opportunities



Opportunities for stock bar conversion



Time saving steel fixing sequencing

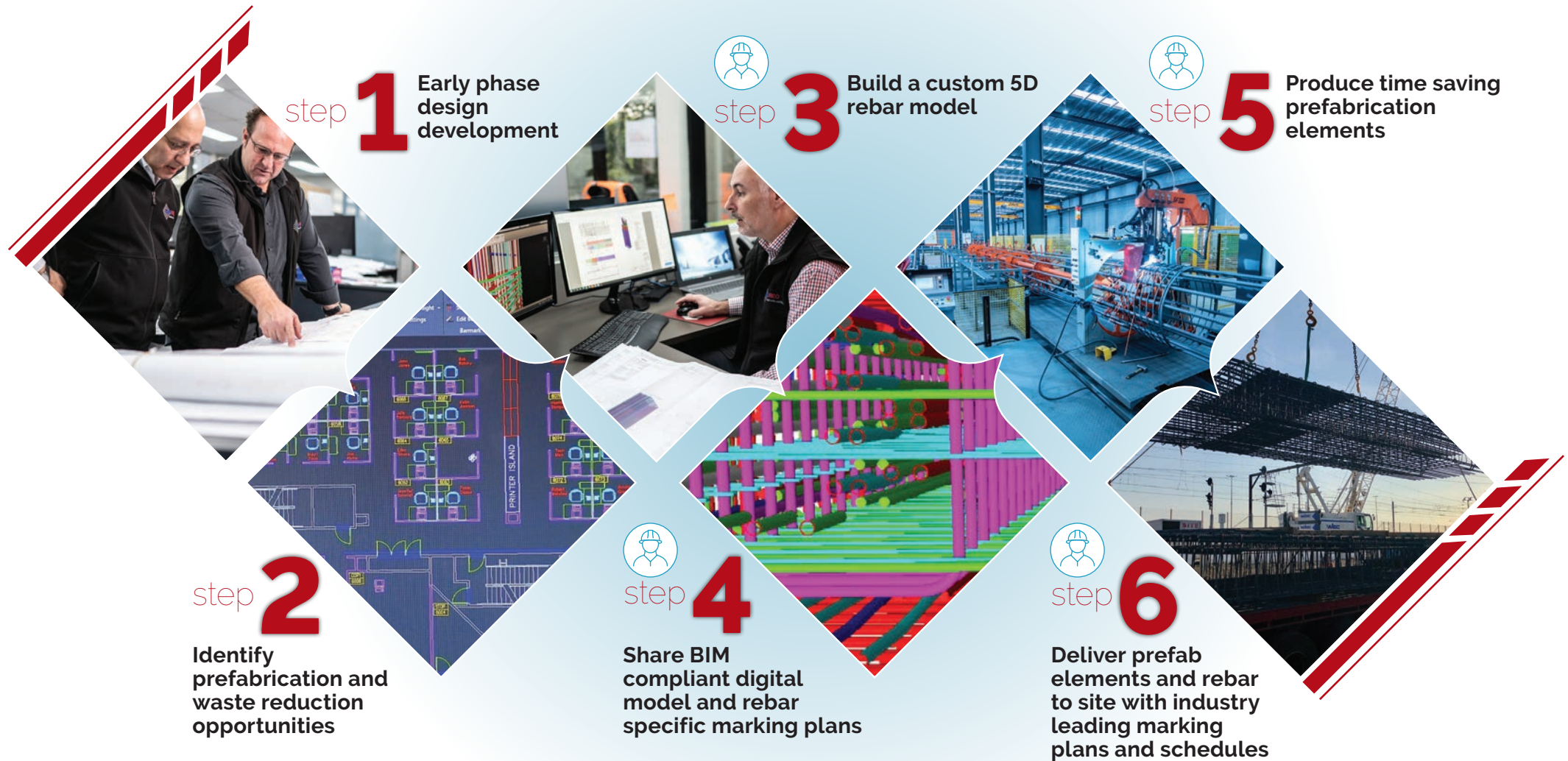


Rebar cost savings

VISUALISE
YOUR BUILD

3D rebar BIM for a wind turbine foundation.

HOW WE WORK | We take ownership of your project from start to finish.



Overseen by an AUSREO Project Manager

CASE STUDY | M4-M5 WestConnex – Rozelle 3B Interchange Project



Location:
Sydney



Contractor:
John Holland and CPB (JHCPB)



Project Overview:

Construction of a new underground motorway interchange to City West Link and an underground bypass of Victoria Road between the Iron Cove Bridge and the ANZAC Bridge, with links to the Western Harbour Tunnel.



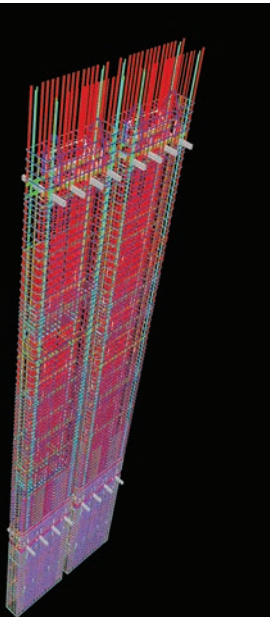
The Challenge:

The Vent Building and Decline Diaphragm Wall Package was a challenging project from start to finish, with a complex reinforcement configuration. All 161 rebar wall cages, each weighing up to 25 tonne, were to be prefabricated off site.



Our Solution:

- Rebar wall panel modelled in ADDA software to identify clashes and time / cost savings.
- Workshops with client, designers, and contractor to review model and resolve rebar layout and constructability issues.
- 500 shop drawings produced directly from the model for the fabrication of the panels.
- Total processed and prefabricated steel quantity = 3,500 tonnes.



“

From the outset, the 3D modelling capabilities of AUSREO highlighted the problems, which provided our team ample time to address and rectify. This kept the project moving on programme and resulted in the best outcome for our client.

Jason Cummings
Project Manager – Avopiling

CASE STUDY | Metro Tunnel Project



Location:
Melbourne



Contractor:
Cross Yarra Partnership (CYP) consortium,
comprising Lendlease, John Holland, and
Bouygues Construction.



Project Overview:

Design and construction of twin 9km tunnels and 5 underground train stations to enhance Melbourne's rail network and integrate with the existing system.



The Challenge:

The ANZAC Station Roof consisted of a congested steel reinforcement design. Located on busy St. Kilda Road, the work areas and delivery windows were restricted. The project team wanted to avoid project delays and cost overruns by maximising loads and minimising the number of deliveries.



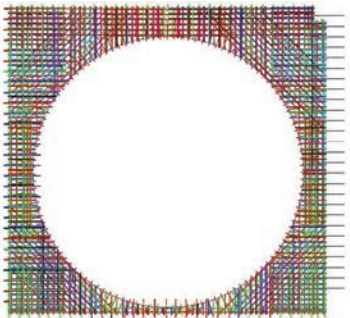
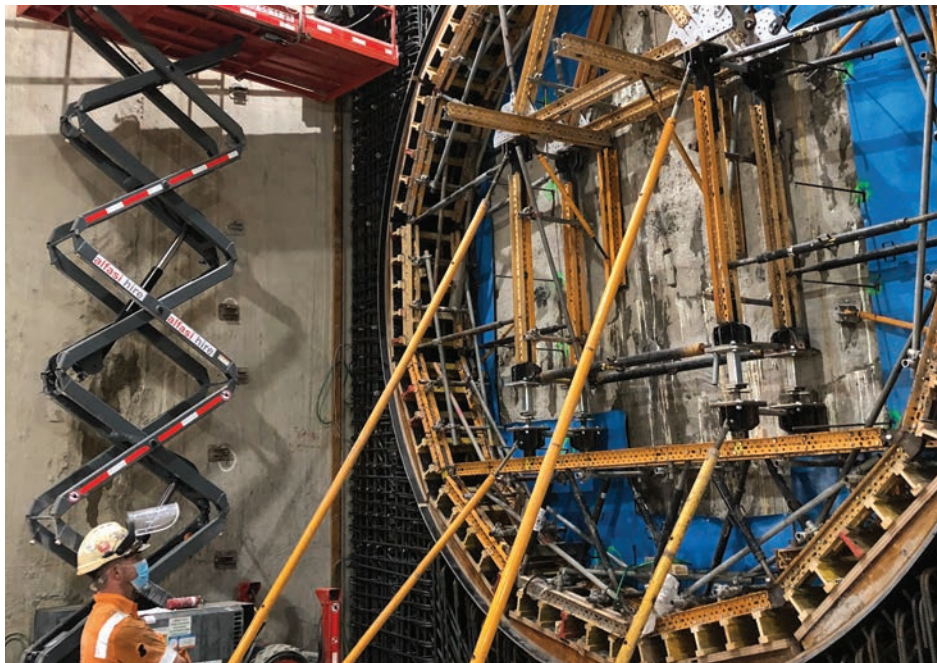
Our Solution:

- Created a 3D model in ADDA that resolved 112 clashes during the design phase thereby, eliminating time and cost issues before the steel was sent to site
- Significant cost savings in the roof slab by identifying stock bar opportunities
- 14% stock bar conversion in 1st concrete pour, increased to 38% by pour 9

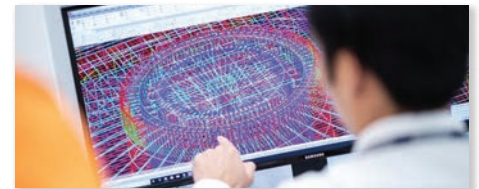
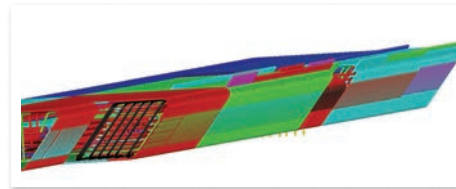
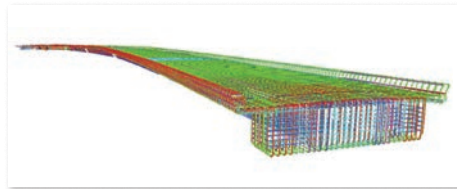
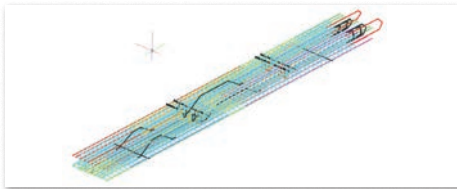
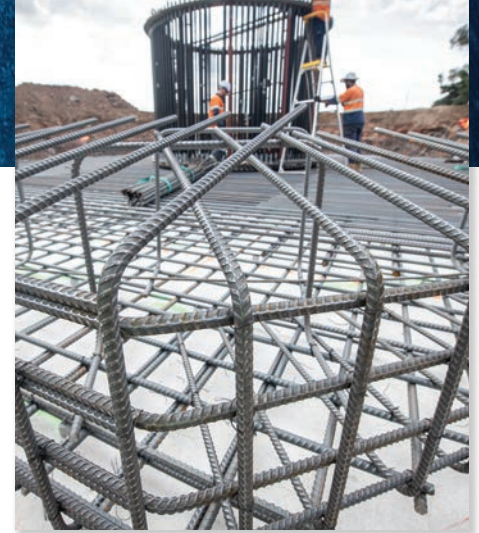
Results:

We received an initial order for 800 tonnes to prove our time and cost savings capabilities using ADDA.

After a successful trial, with zero NCR's, we received further packages to model and supply 40,000 tonnes for the Metro Tunnel project.



ENGINEERING INFRASTRUCTURE PROJECTS



Roads

Westconnex Stage 3B Rozelle Interchange	30,000t
M5-M5 Link	5,000t
Westconnex Stage 3B Vent Building Diaphragm Walls	2,500t
Westconnex New M5 Binocular Shaft Diaphragm Walls	1,000t

Bridges

St Peters Interchange Bridge Piles	1,000t
Nowra Bridge Piles	800t

Rail

Melbourne Metro	40,000t
Waterloo Metro Station	10,000t
Crows Nest Metro Station	8,000t
Rosehill Diaphragm Wall	2,800t

Renewable Energy

Moorabool Wind Farm	5,885t
Ryan Corner Wind Farm	4,000t
Berrybank Wind Farm (2 stages)	2,700t
Murra Warra Wind Farm	2,500t

Build with Confidence



4 Core Values





Contact ausreo technical services to discuss your next project.



ats@ausreo.com.au

Sydney - Prefabrication and Bar Processing Facility
133-145 Newton Road
Wetherill Park, NSW 2164
(02) 9765 2100

Melbourne - Prefabrication and Bar Processing Facility
123 Bunnett Street
Sunshine North, VIC 3020
(03) 9313 2700



AUSREO is proud to be certified by the Australian Certification Authority for Reinforcing Steel.

ausreo.com.au

Follow us on:

[in linkedin.com/company/ausreo-pty-limited/](https://www.linkedin.com/company/ausreo-pty-limited/)

[ig instagram.com/ausreo_pl](https://www.instagram.com/ausreo_pl)