



3D MODELLING AND PREFABRICATION OF DIAPHRAGM WALLS

Sydney Metro West – Rosehill Station Tunnel



GOT A D-WALL JOB COMING UP?



For quality, accuracy and precision

Contact us at:

Wetherill Park (Sydney)
(02) 9765 2100

Sunshine North (Melbourne)
(03) 9313 2700

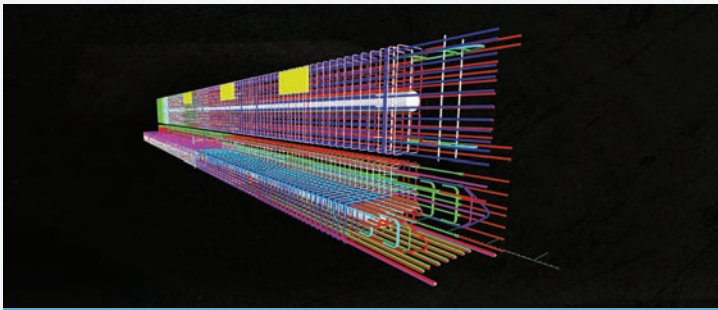
ats@ausreo.com.au



Australian Certification Authority for Reinforcing and Structural Steels



ausreo.com.au

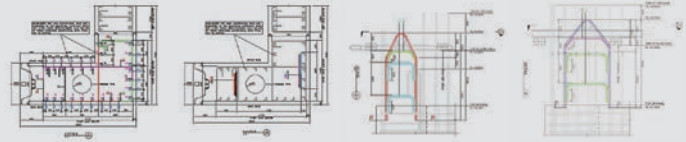


1 3D modelling of 52 diaphragm wall panels

Identify material clashes, buildability issues and optimal steel fixing sequencing prior to supplying around 3000 tonnes of steel cages.

2 Produce 2D fabrication drawings and bar schedules

Integrated 2D and 3D rebar detailing platform works with AutoCAD and is BIM compliant.



3 Bar cut and bent ready for fabrication

Shop drawings produced directly from 3D model.

4 D-wall cage fabrication

A typical panel consists of 4 different cages.



5 Loading 21T D-wall cages onto transport

Lifting points clearly marked to ensure safe handling.

6 D-wall cages lifted into position

Cages delivered to site just-in-time with construction program.



7 Safe and efficient installation

D-wall cages supplied with inco pipes and earthing sleeves and bridges, which meant the complete system did not require any further work once delivered to site.