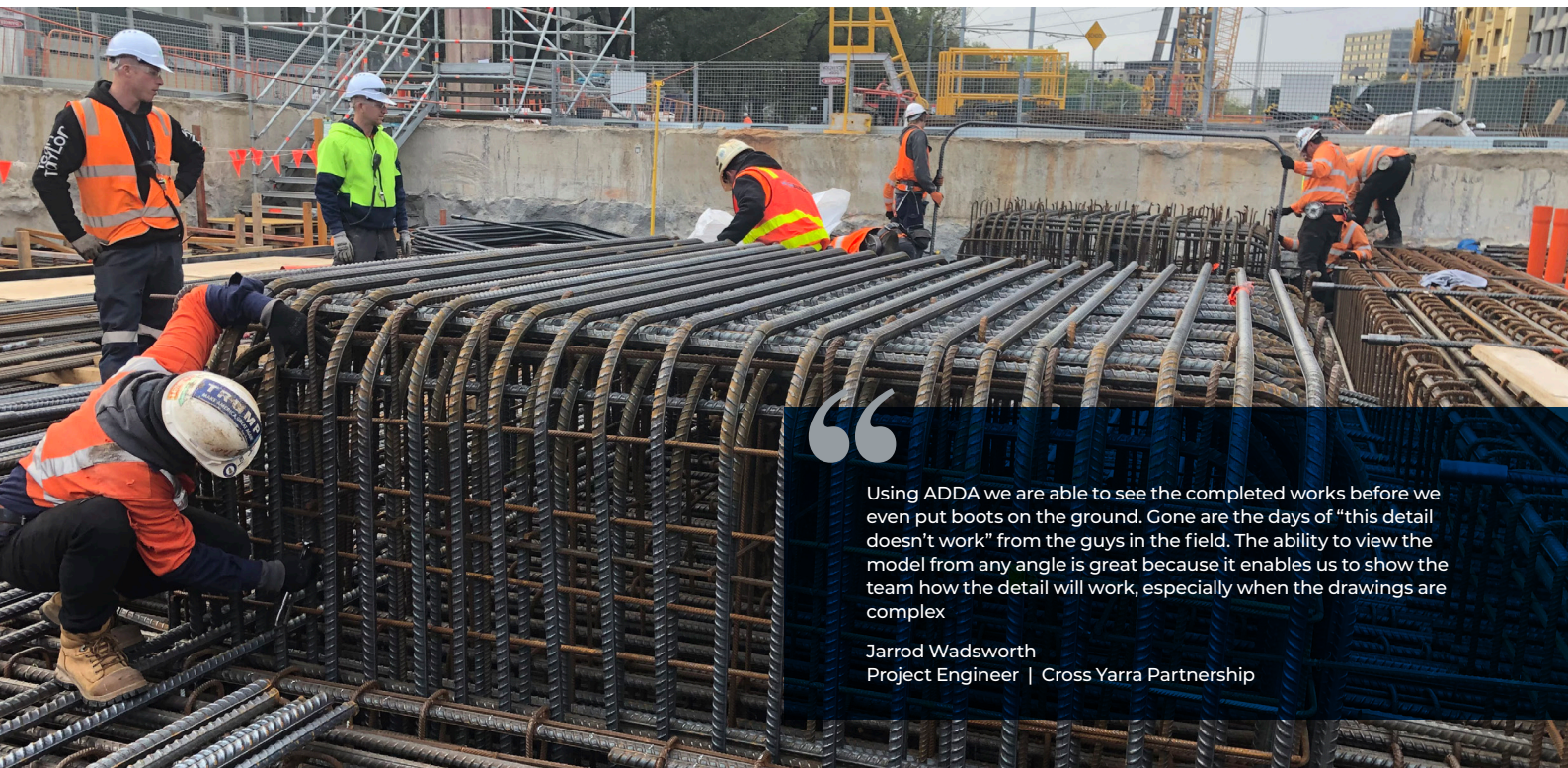


ANZAC STATION ROOF-METRO TUNNEL



Using ADDA we are able to see the completed works before we even put boots on the ground. Gone are the days of “this detail doesn’t work” from the guys in the field. The ability to view the model from any angle is great because it enables us to show the team how the detail will work, especially when the drawings are complex

Jarrold Wadsworth
Project Engineer | Cross Yarra Partnership



Challenge

Ensure a **congested steel reinforcement** design could be constructed with **no delays or cost overruns**.



Solution

Created a 3D steel reinforcement model that **identified 112 clashes** and stock bar **cost saving opportunities** during the design phase.



Results

- Supplied 111,144 bars that **fit together perfectly** with nil returns.
- **Saved the client \$150k** by substituting stock for processed bar.
- BIM compliant model for analytics, project legacy and insights on how to build **SAFER, FASTER** and with **LESS WASTE**.

BUILDER
Cross Yarra Partnership

CLIENT
Rail Projects Victoria

LOCATION
Melbourne, VIC

ROOF STEEL TONNES
2,750



BUILD FASTER. REDUCE WASTE

Advanced Detailing and Design Application (ADDA) is a 3D model that provides DfMA steel reinforcement solutions to reduce cost and accelerate construction time. The technology was developed by AUSREO for the Australian building and construction industry.



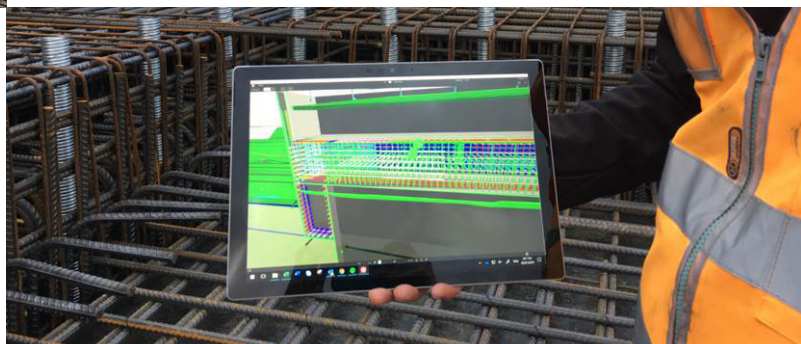
DETECT DESIGN CLASHES BEFORE IT'S TOO LATE

"I would sit in meetings with our steelfixing supervisor and AUSREO's 3D modellers, who would highlight clashes on the model and then resolve heavily congested reinforcement details together, on the computer screen in front of us. To control these issues weeks before they would have inevitably occurred on site was invaluable."

Jack Maher
Metro Tunnel Project Engineer

MAKE IT EASY FOR STEEL FIXERS TO ASSEMBLE

The 3D model eliminated the time typically wasted on steel placement by giving steel fixers a detailed view of the sequence and location of every bar using an iPad. The iPad also allowed the Designers to accurately check and sign-off the steel reinforcement by comparing the 3D model with the as built structure.



SUBSTITUTE STOCK BAR FOR PROCESSED BAR TO SAVE MONEY

Our detailers substituted around 700 tonnes of cut and bent bar with stock bar. This resulted in a 5% cost savings (\$150k) for the steel reinforcement.

We progressively reduced processed bar on the project, starting at 14% processed bar savings on the North Box and finishing with 41% on the South Box.

111,144 BARS DELIVERED TO SITE WITH NIL RETURNS

The benefit of ADDA is quality throughout the project life-cycle.

- * **Collaboration among all stakeholders** during design reviews using a 3D reinforcement model.
- * Transparency to **forecast six weeks ahead** for procurement and scheduling.
- * Enables you to get ahead of the construction program by **manufacturing the bars early and pre-bundling them on Transflats** for just-in-time delivery.



CONTACT US TO FIND OUT HOW ADDA CAN HELP YOU BUILD FASTER AND REDUCE WASTE



SYDNEY

P. (02) 9765 2100

E. wetherillpark@ausreo.com.au

f facebook.com/ausreo.wpk

MELBOURNE

P. (03) 9313 2700

E. sunshinenorth@ausreo.com.au

f facebook.com/ausreosunshinenorth

Follow us on:

in linkedin.com/company/ausreo-pty-limited/

@ instagram.com/ausreo_pl

ausreo.com.au